

Strengthening Our Response: Red Cross & First Nations Collaboration in 2025

Enhancing partnerships for effective humanitarian aid

2025 Wildfire Season Overview

Scale and Impact

The 2025 wildfire season in Saskatchewan involved extensive fire activity, affecting large geographic areas.

Evacuation and Communities

Evacuation zones were established to protect residents, including major First Nations communities impacted by the fires.

Emergency Duration and Response

The prolonged wildfire emergency prompted collaborative relief efforts, including Red Cross response to aid evacuees.

Gratitude for Collaboration

Express gratitude for the strength and cooperation between Indigenous communities and emergency management leaders.

Partnership and Respect

Importance of partnership, mutual respect, and commitment in community safety and recovery efforts.



Response and Relief

IN SASKATCHEWAN

PDAT Program
**Personal Disaster
Assistance Teams**

ERT
**Emergency
Response Team**



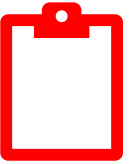
EMERGENCY RESPONSE TEAMS

LARGE SCALE- EVACUATIONS



Photo credit: Richard Marjan - The Star Phoenix

How we can help:



Registration



Personal Services



Reception & Information



Family Reunification



Financial Assistance



Lodging



Clothing



Food

PERSONAL DISASTER ASSISTANCE TEAMS (PDAT) SMALL SCALE – HOUSE / MULTI UNIT FIRE



PROVIDE assistance for basic needs for
72 HOURS

Lodging up to 3 nights

Meals up to 3 days

Emergency Clothing

WE PROVIDE A COMFORT KIT AND
BLANKET TO EACH INDIVIDUAL
if available

If event involves more than 25 people, a
formal agreement would be required to
determine scope of services provided by
CRC on behalf of local community





DISASTER RESPONSE

**AFFECTED BY A PERSONAL DISASTER,
LIKE A HOUSE FIRE?
WE CAN HELP.**

The Canadian Red Cross is here to help those affected by personal disasters.

If you, or someone you know requires support from the Canadian Red Cross, please call:

1-888-800-6493



Red Cross Evacuation Response

Timeline of Key Events

The Red Cross followed a structured timeline to manage wildfire evacuations effectively and promptly.

Logistical Support for Displaced

Evacuation centers and transportation were organized to provide safe shelter and mobility for displaced individuals.

Coordination with First Nations

Collaboration with First Nations leadership ensured culturally appropriate support and effective communication.

Trust and Communication

Trust-building and clear communication were crucial for executing a successful evacuation response.

Unprecedented Fire Activity

Provincial State of Emergency was declared exceptionally early on May 29, 2025.

Impacts Go Beyond Fire Lines

Smoke, evacuations, displacement, the interruption of traditional activities, the emotional and cultural cost.

Loss of Property and Homes

Communities such as Denare Beach experienced devastating property losses. Loss of family cabins that have been passed through generations.

Partnerships Matter

External agencies, Indigenous leadership – all have roles. We must take our lead from the community and their needs.



How we responded – successes & learning points



Support from Neighbouring Communities

Communities showed up and supported evacuations to fill in lack in hotel availability in the North.





Providing supplies as needed

Quickly providing shipments of shelter supplies such as cots, pillows, and blankets.

Always room for improvement

While we do our best, we definitely experienced some challenges and learning points this summer. Our priorities for next year include increasing our volume of staff and volunteers responding in the first 72 hours, streamlining accommodations processes, and increasing cultural safety learning opportunities throughout our organization.

Relief Services Provided

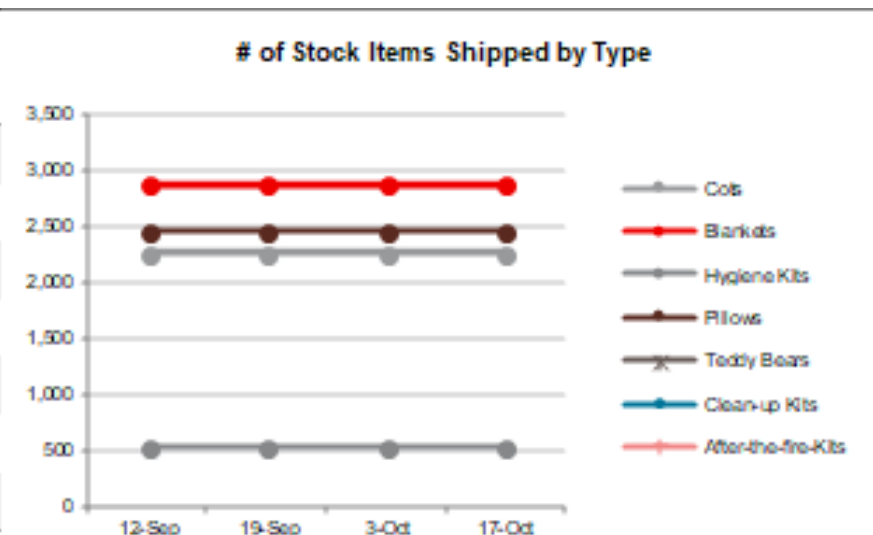
SERVICE	ICON	COUNT
Reception Centres		15
Congregate Shelters		3
Hotel Rooms Booked		1148
Total Households Registered		6400+

Stock Items Shipped	Total to Date (Change since last report)
# of Cots	2,260 (-)
# of Blankets	2,870 (-)
# of Hygiene Kits	530 (-)
# of Pillows	2,450 (-)
# of Clean-up Kits	N/A (-)
# of After-the-fire Kits	N/A (-)
# of Teddy Bears	N/A (-)

Time Reported: 1150 EDT 17 October 2025

Source: [SK Wildfires 2025 - Supplies Made Available.xlsx](#)

Notes:

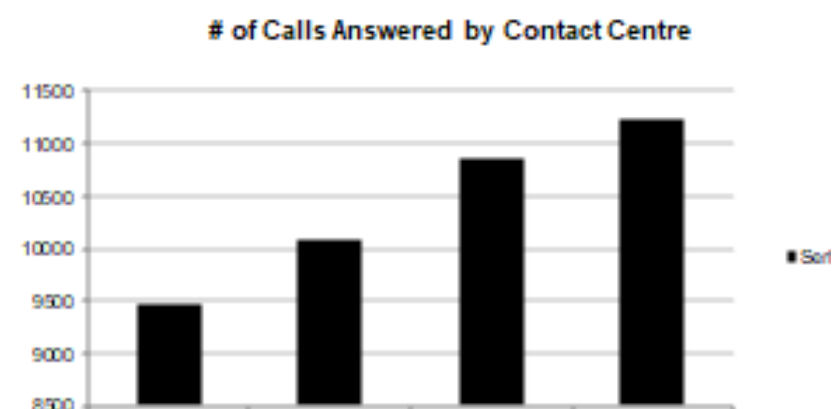


Contact Centre	Total to Date (Change since last report)
Calls Answered	11,281 (+423)

Time Reported: 1155 EDT 17 October 2025

Source: [Contact Centre Dashboard - Inbound](#)

Notes: NEMCCS Operation Report: 2025 Saskatchewan Wildfires



Safety and Wellbeing**Total to Date**

Total # of beneficiary contacts made
by SWB

1,413

Total # of Referrals made to
external agencies

70



Recovery

Recovery Efforts

Mental Health Support

Recovery efforts include mental health services to support emotional healing after wildfires.

Housing and Rebuilding

Initiatives focus on rebuilding homes and infrastructure damaged by wildfires to restore communities.

Community Engagement

Collaborative recovery programs involve First Nations communities with culturally sensitive approaches.

Long-Term Resilience

Planning for long-term recovery builds resilience and prepares communities for future emergencies.



Preparedness and Collaboration

Preparedness for 2026

Volunteer & Staff Training Programs

Training programs equip volunteers and staff with skills to effectively respond during wildfire emergencies.

Indigenous Leadership Engagement

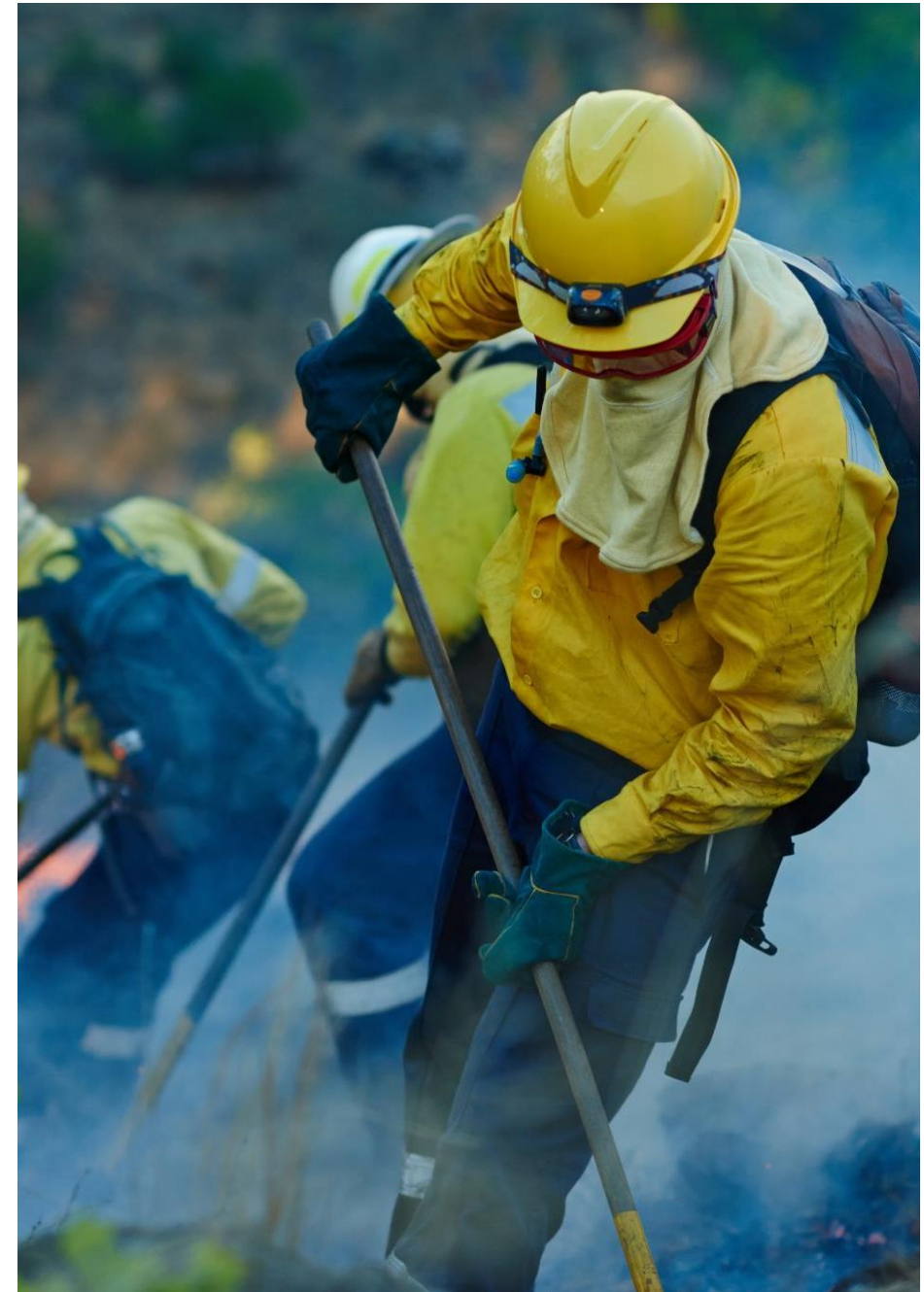
Engaging Indigenous leaders strengthens community collaboration and respects traditional knowledge in wildfire planning.

Emergency Information Distribution

Distributing emergency information to households via social media, websites, or with alerts ensures readiness and quick response during wildfire events.

Community Collaboration

Proactive planning and partnerships with local agencies build resilience and effective wildfire response.



Opportunities for Collaboration



Collaborative Initiatives

Upcoming initiatives aim to strengthen partnerships between Red Cross and First Nations for emergency preparedness.

Community Involvement

Leaders are encouraged to join planning sessions, training, and feedback forums to enhance preparedness.

Support for Preparedness

Support is available to empower community-led efforts in emergency response and recovery.

Building Strong Partnerships

Strong partnerships are essential for effective emergency response and recovery outcomes.

Action and Closing

Call to Action: Standing Together with Indigenous Communities

Our Shared Commitment

The Canadian Red Cross stands in solidarity with Indigenous leadership, working shoulder to shoulder to ensure response and recovery efforts are guided by community voices, cultural priorities, and traditional knowledge.

Culturally safe evacuation and shelter spaces are essential – where families can stay together and traditions and ceremonies are respected.

Please reach out anytime to discuss your community and emergency response services in Saskatchewan.





Questions?

Melanie Horton

t. 306.782.4355

e. melanie.horton@redcross.ca